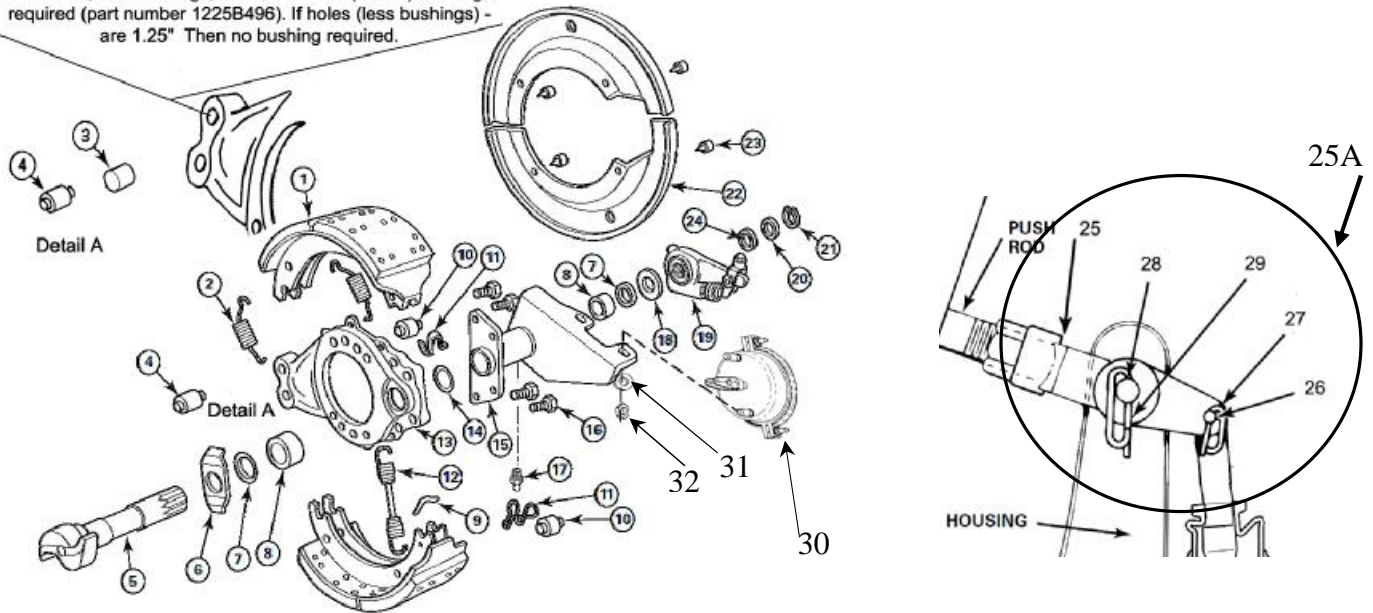


13K BRAKE

13K (15X4) BRAKE EXPLODED VIEW MERITOR SL11XX AND OTHER 13K SUSPENSION / AXLES

SL/STL

If the holes, less bushings, are 1.375" then (Item 3) bushing is required (part number 1225B496). If holes (less bushings) - are 1.25" Then no bushing required.



PARTS 6, 7, 8, 14, 15, 18, 20, 21, 24 ARE IN KIT BBAK03M (-11 or -12 for LH & -21 or -22 for RH)
 PARTS 6, 7, 8, 18, 20, 21, 24 ARE IN KIT BCBK09 PARTS 2, 4, 9, 10, 11, 12 ARE IN KIT BMOK06
 REF: Brake P/N 17187-(10/20) & (12/22)

PARTS LIST

NO.	QTY PER BRAKE	W/C #	DESCRIPTION	NO.	QTY PER BRAKE	W/C #	DESCRIPTION	
1	2	Not Sold By W&C	SMA3124702QP SHOE AND LINING	16	4	S2810B2	CAP SCREW	
2	2	2258H1230	BRAKE SHOE RETAINING SPRING	17	1	1199N1860	FITTING-GREASE	
3***	2	1225B496	ANCHOR PIN BUSHING	18	1	1229S2697	THICK CAMSHAFT THRUST WASHER	
4	2	1259N274	BRAKE SHOE ANCHOR PIN	19*	1	17187-15	AUTO ADJ SLACK-ROCKWELL LH MERITOR AFTERMARKET # R802430 MERITOR OEM P/N A353275Z1144	
5	1	2210H7418	CAMSHAFT - "S" HEAD LH		1	17187-25	AUTO ADJ SLACK-ROCKWELL RH MERITOR AFTERMARKET # R802431 MERITOR OEM P/N A353275A1145	
	1	2210J7420	CAMSHAFT - "S" HEAD RH	20	2	1229N4590	THICK THRUST WASHER	
6	1	1229E4685	CAMHEAD WASHER	21	1	1229D2942	SNAP-RING RETAINER	
7**	2	A1205V1556	CAMSHAFT (grease) SEAL	22	1	3264R1292	DUSTSHIELD	
8**	2	1225L1208	CAMSHAFT BUSHING	23	4	S264B	DUSTSHIELD MOUNT SCREW	
9	2	1218G85	BRAKE SHOE SPRING PIN	24	2	1229J3130	THIN THRUST WASHER	
10	2	2297T7222	ROLLER - BRAKE SHOE	25A*	1	R810018	SLACK CLEVIS ASSEMBLY	
11	2	3105B210	BRAKE SHOE RETAINER	25A*	25*	1	1245X1064	SLACK CLEVIS
12	1	2258L1234	BRAKE SHOE SPRING-RETURN		26*	1	19X127	SMALL SLACK CLEVIS PIN
13	1	A23211M6513	SPIDER ASSY-BRAKE LH		27*	1	2257C1173	SMALL SLACK CLEVIS PIN CLIP
	1	A23211N6514	SPIDER ASSY-BRAKE RH		28*	1	19X1116	LARGE SLACK CLEVIS PIN
14	1	1205G761	O-RING SEAL		29*	1	2257D1174	LARGE SLACK CLEVIS PIN CLIP
15**	1	A453299Z6786	BRAKE CHAMBER BRKT ASSY LH	30*	1	W883276T20	CHAMBER ASSY (TYPE 20)	
		A453299A6787	BRAKE CHAMBER BRKT ASSY RH	31*	2	1229N1626	CHAMBER ASSY-WASHER	
*	FOR USE ON W/C PART NUMBER 17187-12/22 ONLY. ITEMS FOR P/N 17187-10/20 WERE CUSTOMER SPECIFIED (P/N's MAY VARY) Item # 19 comes with Clevis (Item 25A)			32*	2	N3101	CHAMBER ASSY-HEX NUT	
**	ONE OF EACH ITEMS 7 & 8 INCLUDED WITH ITEM 15, 2 OF EACH ITEM MAY BE REQUIRED..			***	DETAIL A. IF ANCHOR PIN HOLE MEASURES 1.375 BUSHING IS REQUIRED, IF HOLE IS 1.25 NO BUSHING REQUIRED.			

REV.10.28.2009



Watson Suspension Systems

725 E. University Drive • McKinney, Texas 75069 • (800) 445-0736 • (972) 547-6020 • Fax (972) 542-0097