

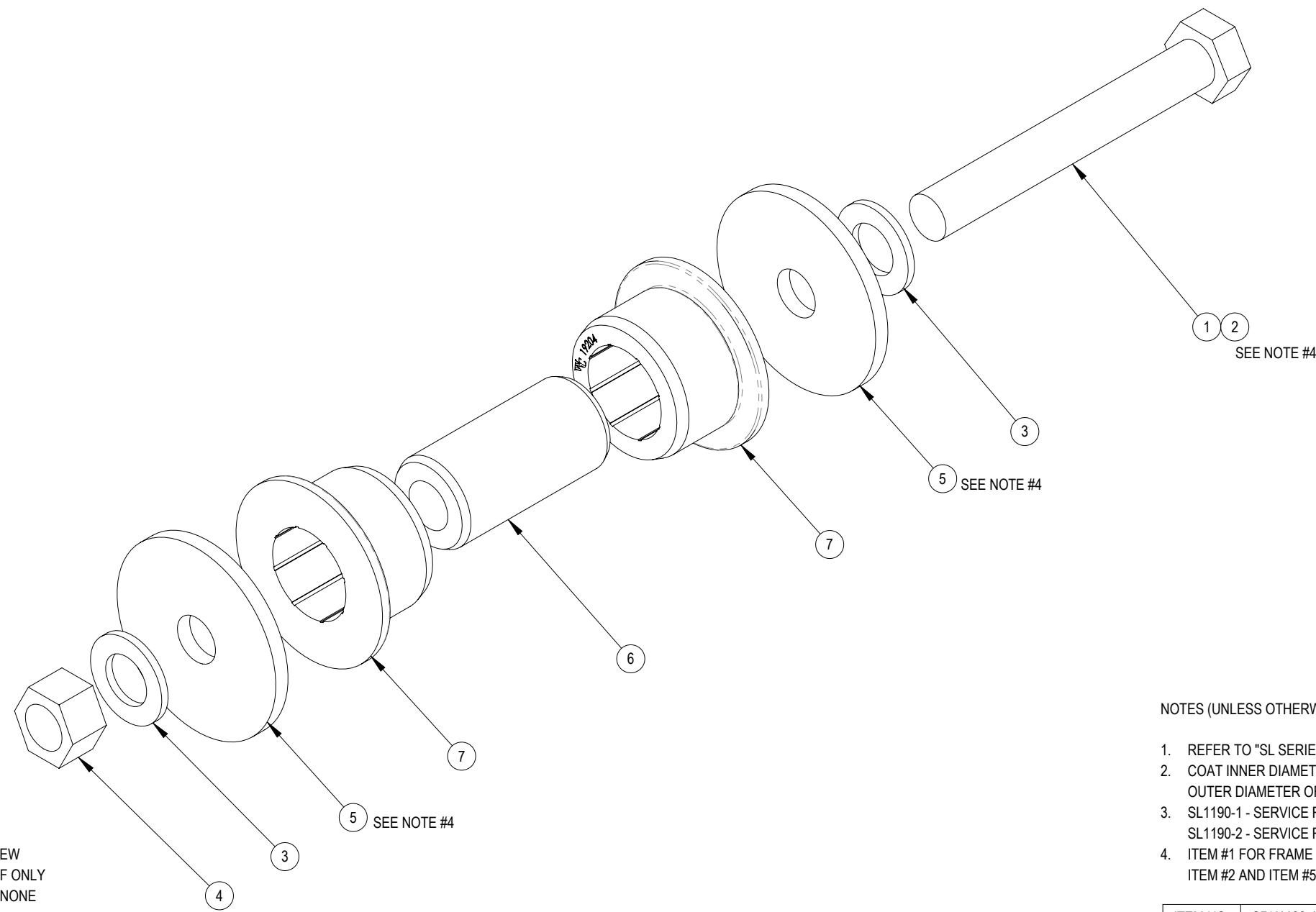
4

3

2

1

REV.	DESCRIPTION	CN	DATE	DRWN BY	CHKD BY
D	ADDED TORQUE SPECS TO DRAWING	C-5340	05/12/2008	DRB	-
E	ADDED VIEW, UPDTD CHARTS	C-5561	06/24/2008	TLK	-
F	UPDATED DRAWING	401764	07/25/2017	MRB	CBP



3D VIEW
ENGR REF ONLY
SCALE: NONE

NOTES (UNLESS OTHERWISE SPECIFIED):

- REFER TO "SL SERIES INSTALLATION AND OPERATION MANUAL" FOR TORQUE REQUIREMENTS.
- COAT INNER DIAMETER OF POLY BUSHING SURFACES WITH LUBRICANT. DO NOT LUBRICATE OUTER DIAMETER OF URETHANE BUSHING. CURRENT SPEC: CHEVRON ULT-PLEX EP-NLGI2
- SL1190-1 - SERVICE REPAIR KIT "POLY BUSHING/PIVOT CONNECTION HARDWARE"
SL1190-2 - SERVICE REPAIR KIT "PIVOT CONNECTION HARDWARE"
- ITEM #1 FOR FRAME BRACKET CONNECTIONS
ITEM #2 AND ITEM #5 FOR AXLE CONNECTIONS

ITEM NO.	SRK1190-1/QTY.	SRK1190-2/QTY.	PART NUMBER	DESCRIPTION
1	4	4	19800-08	CAPSCREW, 0.75 X 5.00 UNC GR8
2	4	4	19800-17	CAPSCREW, 0.75 X 5.50 UNC GR8
3	16	16	10043	WASHER FLAT .75 X 1.48 X .12 HARDENED
4	8	8	19801-09	NUT, LOCK - 0.75 UNC GRC
5	8	-	12927-03	WASHER FLAT 3.25"
6	8	-	91031	BUSHING, SLEEVE - 3.031 LG
7	16	-	19204	POLYURETHANE BUSHING
8	1	-	008703	LUBE PACKET

ALL WATSON AND CHALIN INTELLECTUAL PROPERTY & PROPRIETARY INFORMATION IS PROTECTED BY U.S. & INTERNATIONAL COPYRIGHT LAWS. ANY USE WITHOUT THE EXPRESS WRITTEN PERMISSION OF WATSON AND CHALIN IS PROHIBITED.	UNLESS OTHERWISE SPECIFIED DIM ARE IN INCHES TOL ON ANGLES $\pm 1.0^\circ$ X.X \pm .1 X.XX \pm .06 X.XXX \pm .030 INTERPRET DIM AND TOL PER ASME Y14.5-2009	THIRD ANGLE PROJECTION DIMENSIONS ADHERE TO ASME Y14.5-2009	STEEL PART NO.	SUSPENSION MODEL:	DATE:	SCALE:	WEIGHT:	WATSON AND CHALIN MANUFACTURING INC 725 EAST UNIVERSITY DRIVE MCKINNEY TEXAS 75069	
			PERIMETER	PREVIOUS ASSY:	DRAWN BY:	SIZE:	SHEET:		
			-	SL1190	07/25/2017	1:2	-	TITLE: SERVICE REPAIR KIT - SL1190 BUSHING / PIVOT	DWG NO. SRK1190

4

3

2

1

B

B

A

A