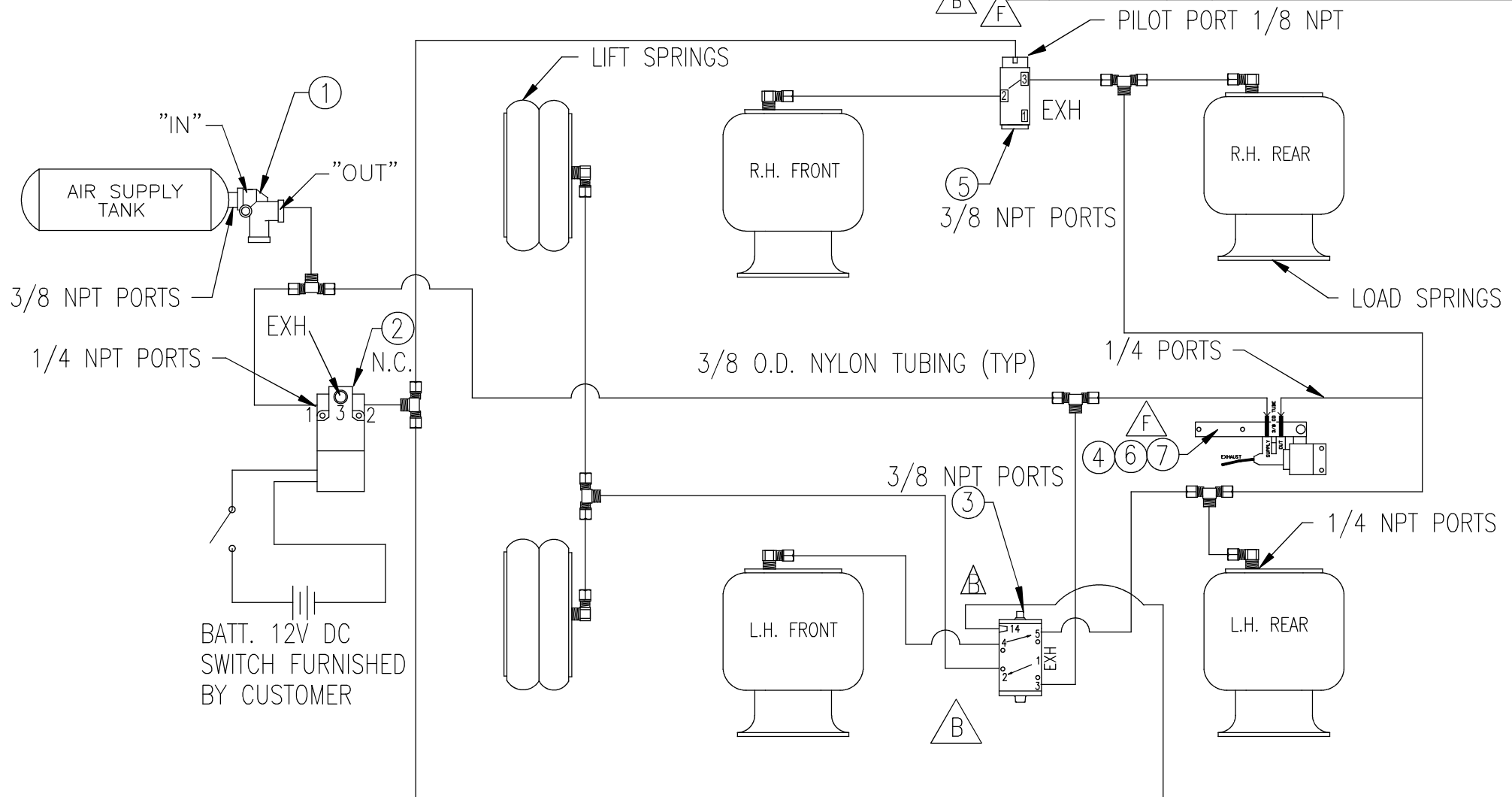


LEVEL	REVISION	DESCRIPTION	ECN	DATE	BY
A	ON ACAD		-	8/11/95	KDH
B	ITEM # 7 WAS 10602		3192	4/30/04	JFF
C	ITEM # 3 WAS 10376		3677	9/26/05	JFF
D	ITEM # 4 WAS 17760		5518	06/05/08	ILK
E	ITEM # 5 WAS 10602-02		C6237	3/19/09	JFF
F	ADDED ITEM # 6 & 7		2888	11/18/13	RT

ITEM	PART NO.	QTY.	DESCRIPTION
1	10100	1	BRAKE PROTECTION VALVE
2	10208	1	ELEC. SOLENOID VALVE "MACK"
3	10376-02	1	PILOT VALVE
4	17760-04	1	HEIGHT CONTROL VALVE
5	10602-01	1	PILOT VALVE
6	11772	1	UPPER BRACKET
7	11773	1	LOWER BRACKET



NOTES:
ALL NYLON TUBING AND FITTINGS
FURNISHED BY CUSTOMER.

← FRONT

PART PROPERTIES	TOLERANCES (EXCEPT AS NOTED)	WATSON & CHALIN MFG., INC.			
AREA	DECIMAL ±	DESCRIPTION TANDEM W/ FRONT AXLE LIFT			
CUT LENGTH	FRACTIONAL ±	SUSPENSION MODEL	SCALE NTS	PREVIOUS ASSEMBLY -	
WEIGHT	ANGULAR ±	DATE 12/2/91	CHKD BY -	DRAWN BY REA	SIZE A
				DRAWING NO. ACK08	